

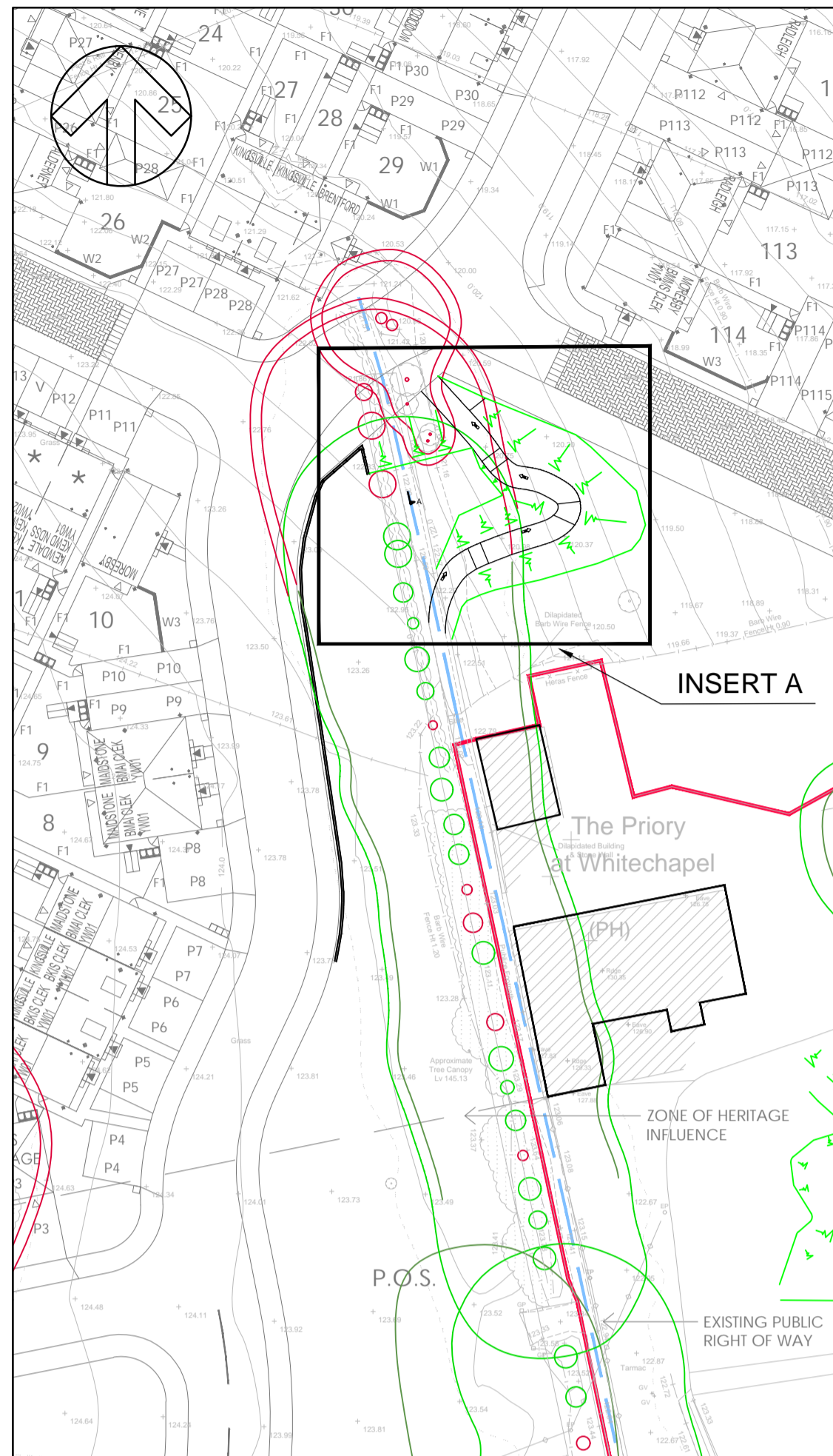
DO NOT SCALE

NOTES:

- 1. ALL DIMENSIONS IN m AND LEVELS IN m AOD.

LEGEND

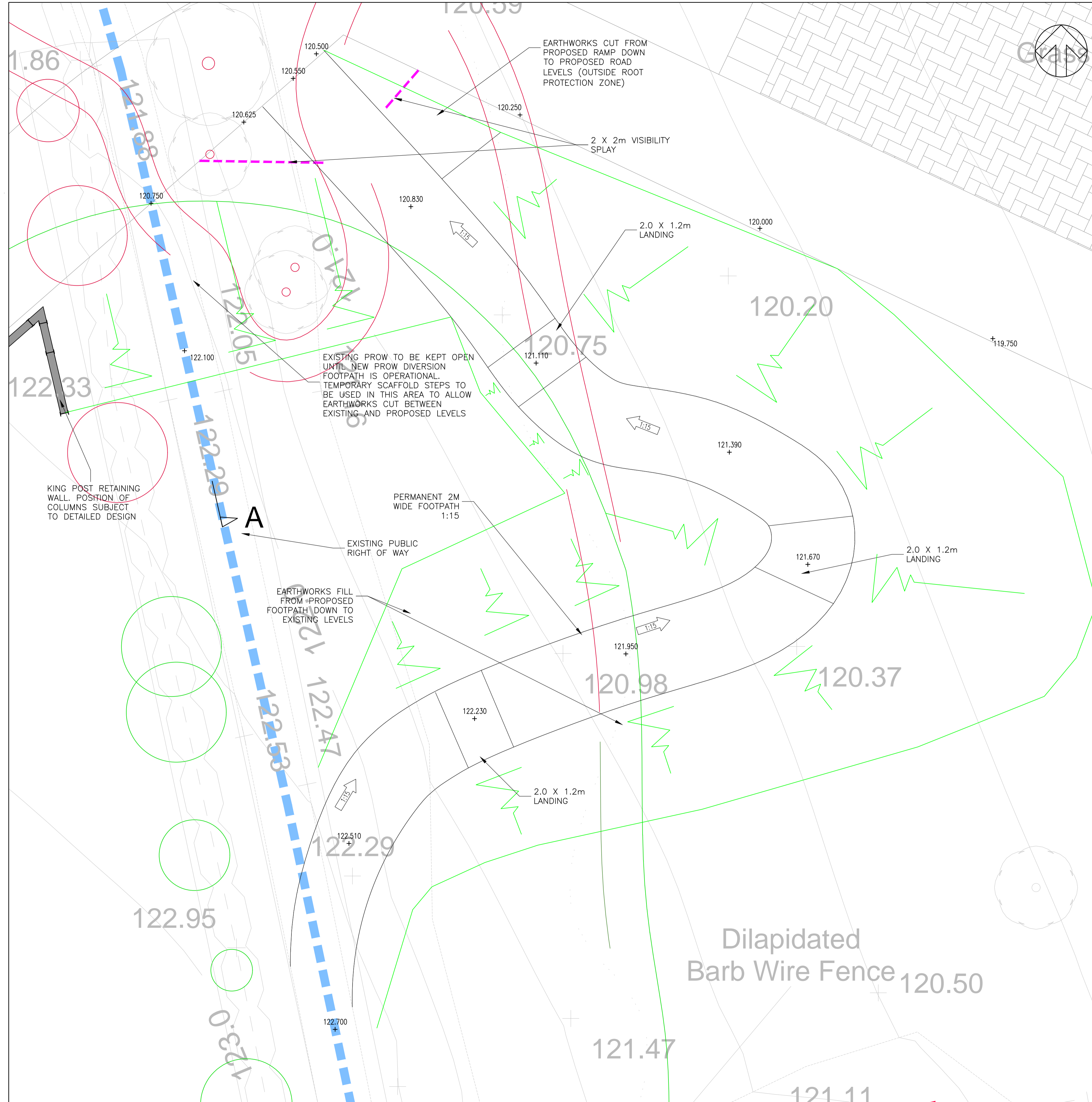
- TREE TO BE REMOVED
- TREE TO BE RETAINED
- EXISTING PROW ROUTE
- PROPOSED RETAINING WALL
- 120.750 PROPOSED LEVEL
- SITE BOUNDARY



LOCATION PLAN SCALE 1:500

NOTES

- 1. THE PROPOSALS ON THIS DRAWING ARE SUBJECT TO DISCUSSION WITH THE PROW OFFICER
- 2. DESIGN AND CONSTRUCTION MUST BE READ IN ACCORDANCE WITH THE ARB METHODOLOGY AND SUPERVISION WITH THE TREE CONSULTANT ECUS



INSERT A - STEP GENERAL ARRANGEMENT SCALE 1:50

REV	DATE	BY	DESCRIPTION	CHK	APP
P03	04/01/22	MW	UPDATED TO SUIT PROW OFFICER COMMENTS	NS	DB
P02	02/12/22	MW	RAMP FOOTPATH RE-ROUTE	NS	DB
P01	28/11/22	MW	FIRST ISSUE	NS	DB

DRAWING STATUS: S1- FOR COORDINATION

**wsp**  
 3 Wellington Place, Leeds, LS1 4AP, UK  
 T+ 44 (0) 113 395 6200, F+ 44 (0) 113 395 6201  
 wsp.com

CLIENT: BDW HOMES WEST YORKSHIRE

ARCHITECT:

SITE/PROJECT: WHITECHAPEL ROAD, CLECKHEATON

TITLE: PROW RAMP OPTION PLAN

SCALE @ AT:	CHECKED:	APPROVED:
AS SHOWN	NS	DB

PROJECT NO:	DESIGNED:	DRAWN:	DATE:
70052051	MS	MW	January 23

DRAWING NO:	REV:
H8040-0014_Details - Engineering_AFU_ - PROW Ramp Option Plan_	P03

© WSP UK Ltd

File name: \\UK.VSPGROUP\CENTRAL\_DATA\PROJECTS\70052051\005400\005404\_S38 WORKS\_WHITECHAPEL\_CLECKHEATON\WIP\DEVELOPMENT\DRAWINGS\SS8\_SECTION\_38\_PLANS\H8040-0014\_DETAILS - ENGINEERING\_AFU\_ - PROW RAMP OPTION PLAN\_P03.DWG, printed on 05 January 2023 14:46:38, by Vili, Michael